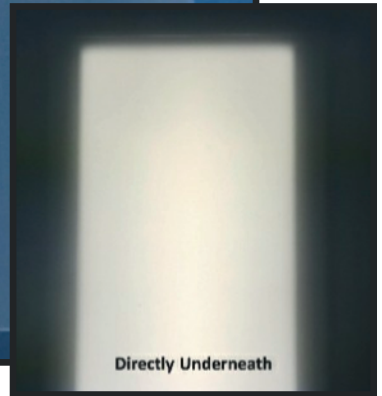
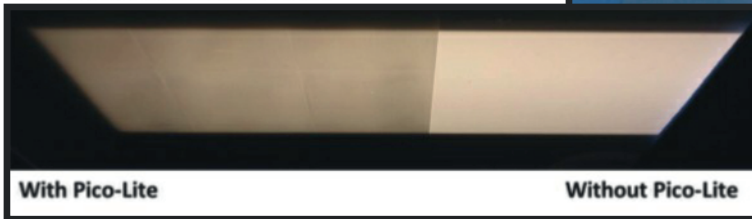
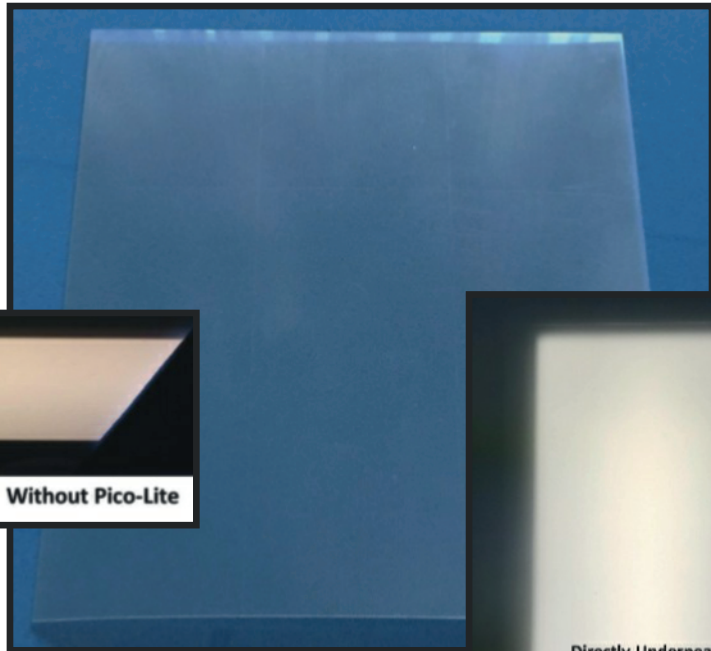




SLP (UK) LIMITED
LIGHTING & CEILING COMPONENTS

Pico-Lite 19

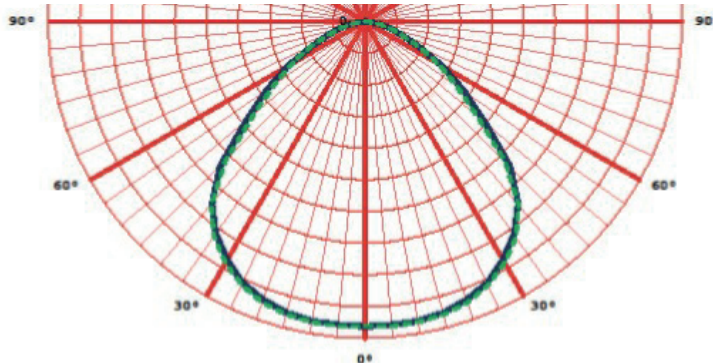


Pico-Lite 19 is designed to significantly reduce glare whilst having the control to distribute the light.

Arguably the best <UGR19 material available, Pico-Lite 19 has been manufactured with glare reduction at the forefront of its design. Available as a film or solid sheet, Pico-Lite 19 is a unique product boasting high light transmission whilst suppressing high angle light above 65 degrees. Independent photometric tests show <UGR19 results under almost all circumstances due to the optimal prism design and size and can reach this with an output of up to 5000 lumens.

Cotton chrome gloves are required when handling this material.

	PicoLite19 Film	Pico-Lite19 Solid Sheet
Material	PET	Acrylic
Pattern	Pico-Lite Prism	Pico-Lite Prism
Thickness	0.15mm	1.5mm
Tolerance on Thickness	10%	10%
Material Light Transmission	>91%	>91%
Colours available	Clear	Clear
Panel Size	610 x 610mm Larger sizes will follow	1200 x 600mm
Roll Size	150M	N/A



LED Lenses

S.L.P. UK Limited, 11 Faraday Road, AYLESBURY, Bucks, HP19 8RY, England
Tel: +44 (0)1296 428822 Fax: +44 (0) 1296 428823 E-mail: sales@slpuk.com Web Site www.slpuk.com

S.L.P UK Limited reserve the right to change or amend specifications without prior notification



SLP (UK) LIMITED
LIGHTING & CEILING COMPONENTS

Pico-Lite 19

Pico-Lite 19 1.5mm Acrylic Luminaire Details (585 x 585 mm Luminous area, 5500 Lumen Output)

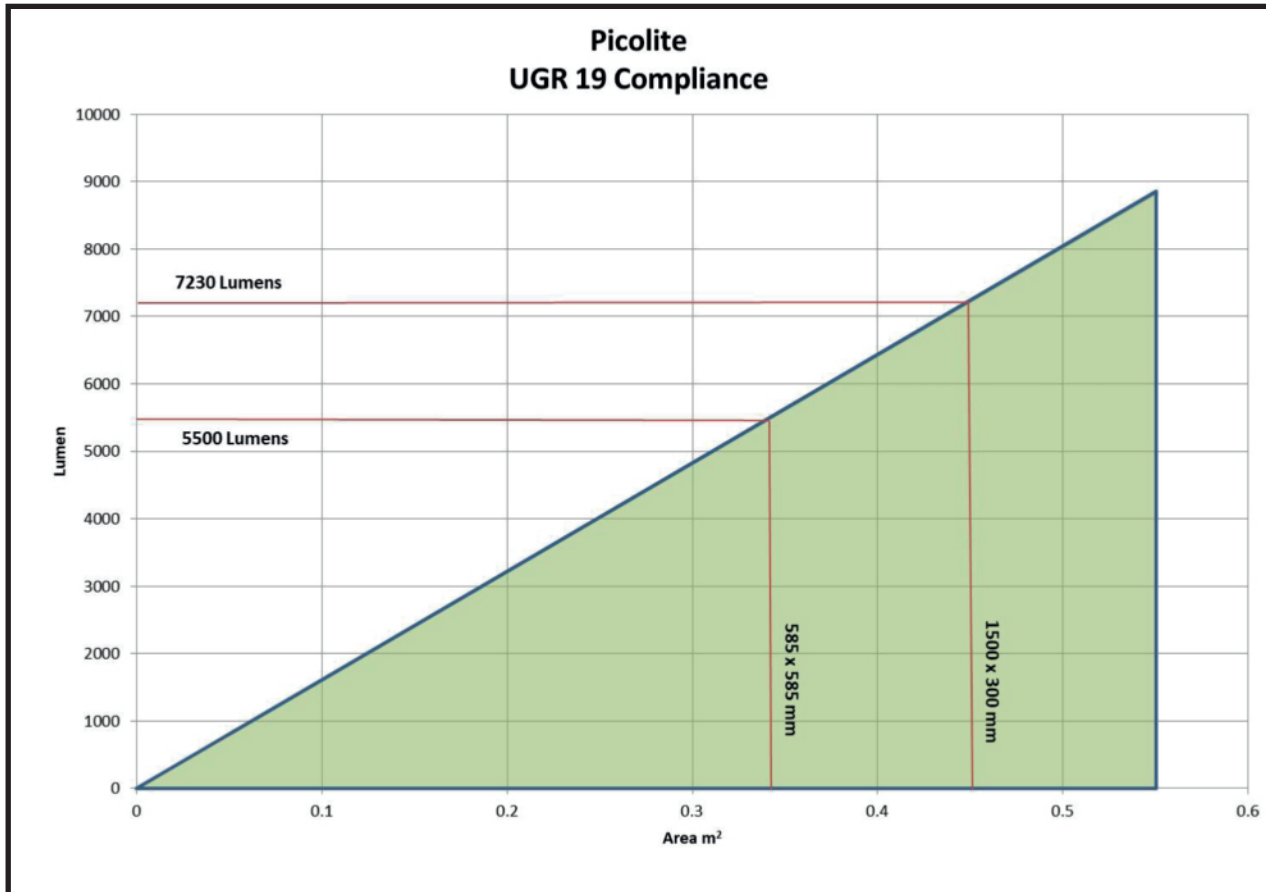
Room Dimension X/Y		Viewed Crosswise 0°					Viewed Endwise 90°				
2H	2H	15.7	17.1	16.0	17.4	17.7	15.2	16.6	15.6	16.9	17.3
	3H	16.9	18.1	17.2	18.5	18.8	16.6	17.9	17.0	18.2	18.5
	4H	17.5	18.7	17.9	19.0	19.4	17.3	18.5	17.7	18.8	19.2
	6H	18.0	19.1	18.4	19.4	19.8	17.8	18.9	18.2	19.2	19.6
	8H	18.1	19.1	18.5	19.5	19.9	17.8	18.9	18.3	19.3	19.7
	12H	18.0	19.0	18.5	19.4	19.8	17.8	18.8	18.2	19.2	19.6
4H	2H	15.9	17.1	16.3	17.5	17.8	15.6	16.7	16.0	17.1	17.5
	3H	17.3	18.3	17.7	18.7	19.1	17.1	18.1	17.5	18.5	18.9
	4H	18.1	19.0	18.5	19.4	19.8	18.0	18.8	18.4	19.2	19.7
	6H	18.6	19.4	19.1	19.8	20.3	18.5	19.3	18.9	19.7	20.1
	8H	18.7	19.5	19.2	19.9	20.4	18.6	19.3	19.1	19.8	20.2
	12H	18.8	19.4	19.3	19.9	20.4	18.6	19.3	19.1	19.8	20.3
8H	4H	18.2	18.9	18.7	19.4	19.8	18.1	18.8	18.6	19.2	19.7
	6H	18.8	19.4	19.3	19.8	20.3	18.7	19.3	19.2	19.7	20.2
	8H	19.0	19.5	19.5	20.0	20.5	18.9	19.4	19.4	19.9	20.4
	12H	19.0	19.4	19.5	20.0	20.5	18.9	19.3	19.4	19.9	20.4
12H	4H	17.4	18.1	17.9	18.5	19.0	17.3	18.0	17.8	18.4	18.9
	6H	18.1	18.7	18.7	19.2	19.7	18.0	18.6	18.6	19.1	19.6
	8H	18.5	19.0	19.0	19.5	20.0	18.4	18.9	19.0	19.4	19.9

To Achieve UGR 19 Compliance as standard CIE 117 table shown.

Luminaires must have Lumen output / Luminous area combination in the green area of the graph below.

For instance with a Luminous area of 585 x 585 mm = 0.34m² the maximum lumen output to achieve UGR table above would be 5500 Lumens.

Similarly a 1500 x 300 luminaire would have a maximum lumen output of 7230 Lumens



LED Lenses

S.L.P. UK Limited, 11 Faraday Road, AYLESBURY, Bucks, HP19 8RY, England
Tel: +44 (0)1296 428822 Fax: +44 (0) 1296 428823 E-mail: sales@slpuk.com Web Site www.slpuk.com

S.L.P UK Limited reserve the right to change or amend specifications without prior notification